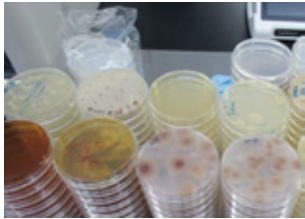
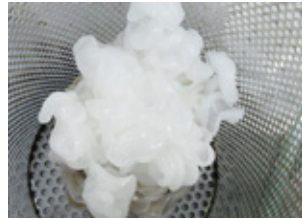


Separator Kit for Disposal Petri Dish

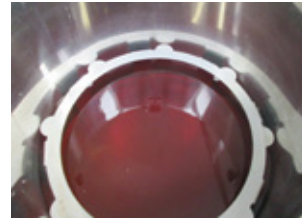
Petri dishes with the medium remained are naturally separated after sterilization, helping to save time and labor.



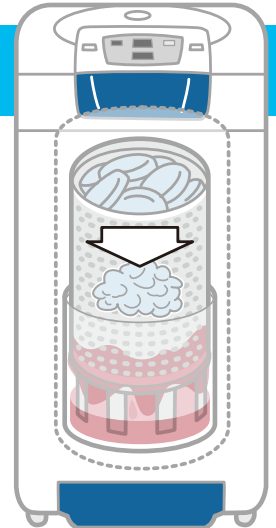
Before Sterilization



Melted Petri Dish



Melted Medium



Separator Kit for Disposal Petri Dish

Model		Dimensions		Applicable Autoclave
	Separator Kit for Disposal Petri Dish	Basket	Inner Dimension φ 275 × 490 H mm	SX-500, SX-500E, ASX-500
		Bucket	Inner Dimension φ 299 × 279 H mm	
		Stand	Outer Dimension φ 296 × 100 H mm	



Basket

Model	Inner Dimensions	Max. loaded number per unit	Applicable Autoclave	
	ACA-1100B	φ 415 × 233 H mm	2	FLS-1000
	ACA-700B	φ 345 × 181 H mm	3	SX-700, SX-700E, SX-700BH
	ACA-315B	φ 300 × 181 H mm	3	SX-500, SX-500E, SX-500BH, ASX-500
			2	SX-300, SX-300E


Bucket

Model	Inner Dimensions	Max. loaded number per unit	Applicable Autoclave	
	ACA-1000KS	Φ 415 × 239 H mm	1	FLS-1000
	ACA-700KS	Φ 344 × 279 H mm	2 With hook for stacking	SX-700, SX-700E, SX-700BH
	ACA-315KS	Φ 299 × 279 H mm	2 With hook for stacking	SX-500, SX-500E, SX-500BH, ASX-500
			1	SX-300, SX-300E

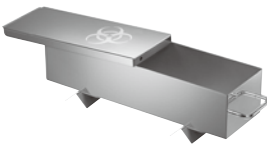
Long Basket, Lid for Long Basket

Model	Long Basket	Inner Dimensions	Applicable Sterilizing Bag	Applicable Autoclave
	Lid			
	ACA-1000TP	Φ 415 × 456 H mm	—	FLS-1000
	1000TL	—		
	ACA-710TP	Φ 345 × 527 H mm	DAB-700	SX-700,SX-700E, SX-700BH
	700TL	—		
	ACA-325TP	Φ 300 × 491 H mm	DAB-321	SX-500,SX-500E, SX-500BH, ASX-500
	300TL	—		
	ACA-310TP	Φ 300 × 311 H mm	DAB-321	SX-300,SX-300E
	300TL	—		

Sterilizing Bag

Model	Max Allowable Temperature (Material)	Dimensions (Thickness, Set)	Applicable Autoclave	
	DAB-700	140°C (Polyester)	600 W × 800 H mm (40 μm, 100 pcs / set)	SX-700,SX-700E, SX-700BH
	DAB-321	140°C (Polyester)	550 W × 750 H mm (40 μm, 100 pcs / set)	SX-500,SX-500E, SX-500BH, ASX-500, SX-300,SX-300E

Biowaste Sterilization Container

Model	Dimensions (Weight)	Remarks	Applicable Autoclave	
	ST-ZERO	106 W × 350 D × 80 H mm Protruding portion 380 D (1.2 kg)	Accommodate up to 25 × 25 ml disposable pipettes Two stands included Material : SUS304	FLS-1000 SX-700,SX-700E, SX-700BH SX-500,SX-500E, SX-500BH, ASX-500 SX-300,SX-300E

Sales Office:

TOMY DIGITAL BIOLOGY CO., LTD.

3-14-17 Tagara, Nerima-ku, Tokyo 179-0073, Japan

e-mail: info@digital-biology.co.jp

URL: <https://www.digital-biology.co.jp/manufactured/>

phone: +81-3-5971-8160 fax: +81-3-3970-6036

TOMY SEIKO CO., LTD.

Manufacturer:

TOMY KOGYO CO., LTD.

3-14-17 Tagara, Nerima-ku, Tokyo 179-0073, Japan