

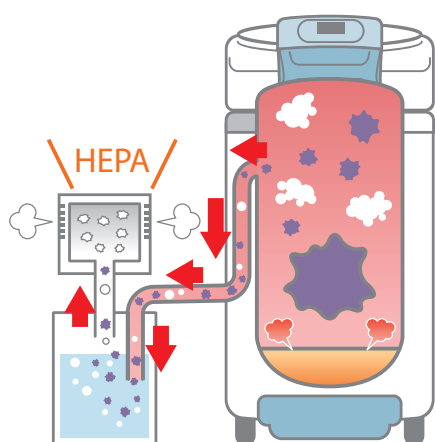


Biohazardous Waste Autoclave SX-700BH/500BH

- Next to biosafety cabinet
- Immediate sterilization after bench-work
- Decontamination before disposal of biowaste

Numerous biosafety guidelines endorse the use of autoclaves to inactivate potentially infectious laboratory waste prior to disposal, as part of creating secondary barriers that prevent infectious disease from spreading to laboratory workers, waste management personnel and the general public.

The TOMY SX-BH series are designed to exhaust air and steam coming from the chamber through HEPA filter.



Air and steam exhaust through HEPA Filter (DOP 99.97%)*

Air and steam inside the chamber go to the cooling water tank.

After cooling down, they are exhausted to the laboratory work area through HEPA filter unit that is equipped with a HEPA filter (DOP 99.97%).

* It does not guarantee to remove contaminants completely.
Follow the biosafety guideline in your laboratory.

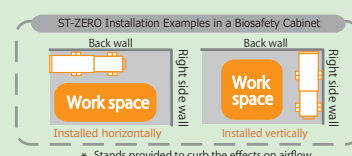
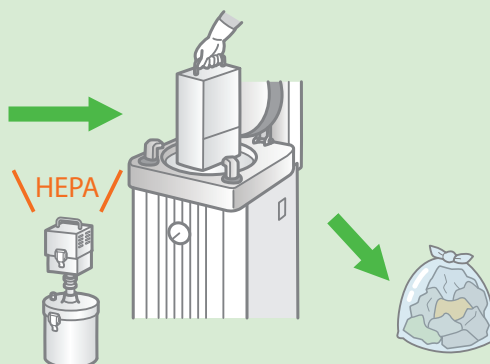
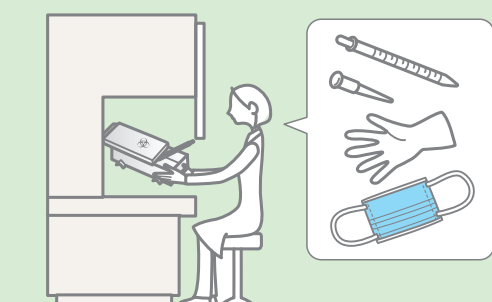


Biowaste Sterilization Container ST-ZERO

Biowaste Sterilization Container ST-ZERO can sit on the workbench of the biosafety cabinet without disturbing air-flow and accommodate disposables inside the work area of the biosafety cabinet.

ST-ZERO can be vertically loaded to the Autoclave without a liquid drop falling. A several ST-ZERO can be accommodated in the chamber of Autoclave SX-700BH.

Put disposals and close the lid of ST-ZERO
inside the Bio Safety Cabinet.



* Stands provided to curb the effects on airflow.

Secure Sterilization & Time-saving

Autoclave is essential for almost any type of laboratory, and it is crucial to choose the best autoclave that suits your needs. Secure Sterilization and Time-saving are the high priority to consider for researchers, and the SX-BH series are designed with innovative features as standard.

Fine Pressure Adjustment

Secure Sterilization condition is created by saturated steam that temperature and pressure keep the balance for a certain time.

The SX-BH series heat water in the chamber and create steam.

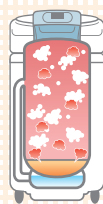
The generated steam is discharged with air from the chamber to approach the saturated steam condition.

When air remains in the chamber, the balance of temperature and pressure breaks and it makes pressure rise.

Fine Pressure Adjustment monitors temperature and pressure, works automatically to remove residual air from the chamber, and adjusts pressure to approach ideal condition for more effective sterilization.

Residual air may break the ideal balance.

Fine Pressure Adjustment to approach ideal condition



Cooling Fan System

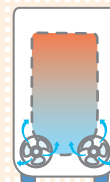
The SX-BH series are standard-equipped with a dual-fan cooling system, shortening overall operation time.

The Cooling Fan System reduces cooling time by compared to non-fan operation.

It will save your time and give you more to focus on other things.

Single fan, Dual fans or Non-fan operation is selectable.

Dual-fan



Specifications

Model		SX-700BH	SX-500BH
Equipment category		Laboratory equipment	
Operating temperature range	Sterilizing	105°C to 135°C ※ 1	
	Heating	45°C to 104°C	
	Warming	45°C to 95°C ※ 1	
Maximum operating pressure		0.25MPa	0.263MPa
Temperature	Display form	Digital	
	Display range	-9°C to 155°C	
Pressure gauge	Display form	Analog	
	Display range	0MPa to 0.4MPa	
Time	Display form	Digital	
	Setting range	0:01 ~ 9:59 / 1 ~ 99hours / 1 ~ 999minutes / 0:01 ~ 9:59, 10 ~ 99 hours (Selectable)	
Safety devices		As listed in Safety Devices ※as listed on the right	
Chamber	Dimensions(mm)	Φ370x774	Φ325x733
	Capacity	79 L	58 L
	Material	SUS304 (Stainless Steel)	
Main body	Dimensions(mm)	470W×528D×1,003H (Excluding protruding)	410W×477D×970H (Excluding protruding)
	Net weight	72 kg	60 kg
Bio Box	Dimensions(mm)	Φ215×525H	
	Net weight	5 kg	
Power requirements		AC230V, 50/60Hz, 15A 1P	AC120V, 50/60Hz, 20A 1P AC230V, 50/60Hz, 15A 1P

Features



- HEPA filter(DOP 99.97%) equipped
- Fine pressure adjustment function
- Ion detector for water level detection
- Standard equipped cooling fan (2 fans)
- Variable exhaust speed (6 levels)
- Operation start timer
- Liquid sterilizing course selectable
- Top-open lid
- Foot pedal to open lid
- Microprocessor for controlling temperature
- Flat internal surface of the chamber
- Intuitive display with work monitor
- Operation indication lamp
- Ergonomic height design
- Small foot print

Safety Devices

- Safety valve
- No water heating prevention
- Leakage breaker
- Lid interlock
- Over-temperature prevention
- Over-pressure prevention
- Pressure sensor malfunction detection
- Temperature sensor malfunction detection
- Exhaust valve malfunction detection
- Low sterilizing water level detection
- Chamber lid open/close detection

※ 1 Max operating temperature will be changed for the high altitude program and it depends on the altitude level.

Full Package for Biohazardous Waste Autoclave SX-700BH

Autoclave SX-700BH (including Bio Box)	OP Option Biowaste Sterilizing Container ST-ZERO
 ×1 set	 ×1 set

Sales Office:

TOMY DIGITAL BIOLOGY CO., LTD.

3-14-17 Tagara, Nerima-ku, Tokyo 179-0073, Japan

e-mail: info@digital-biology.co.jp

URL: <http://www.digital-biology.co.jp/manufactured/>

phone: +81-3-5971-8160 fax: +81-3-3970-6036

TOMY SEIKO CO., LTD.

Manufacturer:

TOMY KOGYO CO., LTD.

3-14-17 Tagara, Nerima-ku, Tokyo 179-0073, Japan